

HOME PACKAGE CORAL HOMES



Facade image may depict features such as land, landscaping, timber decking, furniture, window treatments and lighting which are not included in the package price or which are not available from Coral Homes.

\$284,741*

LAND NOT INCLUDED

EASTWOOD ESTATE Goonellabah



Home Size: 254.14m² |

MILAN 27 ST KILDA FACADE

HOME INCLUSIONS:

- ✓ Facade as shown
- ✓ Carpet and tiling
- ✓ H1 class site works allowance
- ✓ Basix requirements
- ✓ Coloured concrete driveway and path to entry
- ✓ Integrated slab and tiling to outdoor living area
- ✓ Flyscreens to windows and sliding doors
- ✓ \$2,500 fencing allowance
- ✓ Letterbox and turf to the front of home
- ✓ Termite resistant structural timber framing
- ✓ NBN lead in
- ✓ Stained timber feature front entry door
- ✓ Panelift automatic garage door with 3 remotes
- ✓ myChoice® selection showroom consultation^[^]
- ✓ Mirror sliding doors to robes
- ✓ Extended tile height to 2100mm on vanity wall to bathroom and ensuite
- ✓ Ceasarstone bench tops to kitchen, bathroom and ensuite
- ✓ Semi-frameless shower screen to bathroom and ensuite
- ✓ Timber look garage door

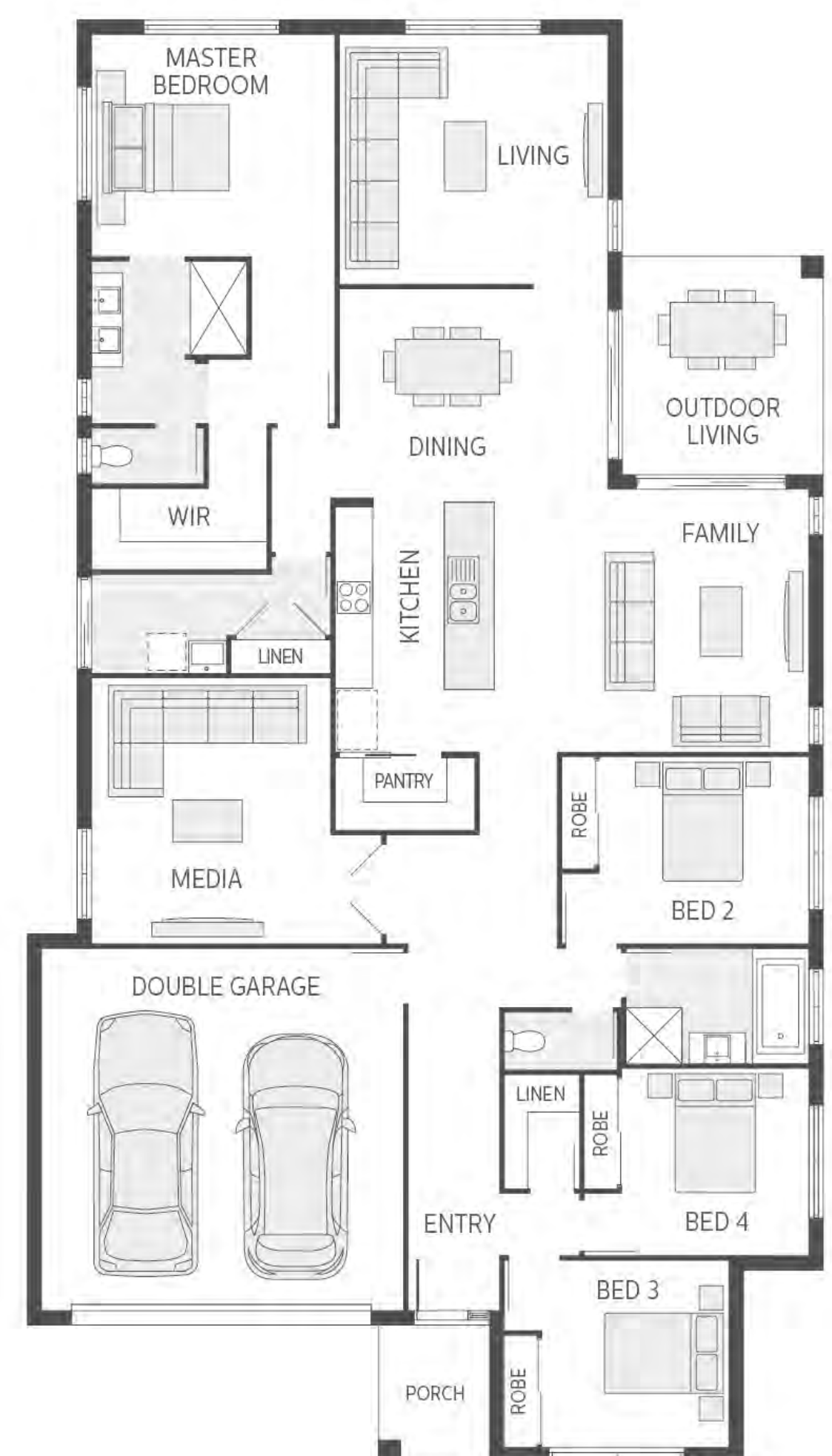
FOR MORE INFORMATION

Haley Corrigan | Coral Homes Sales Consultant

h.corrigan@coralhomes.com.au

P: 02 6681 3625 | M: 0409 516 970

14 Elkhorn Parade, Ballina, NSW



Floor plan is indicative only, conceptual in nature and subject to change. Floor plan may depict fixtures, fittings, features, finishes, inclusions, furnishings, vehicles and/or other products which are not included in the house design, not included in the package price and/or not available from Coral Homes¹.

*Price shown is based on Coral Homes' 26-08-19 price list. Land not included. Price shown does not include additional amounts payable in respect of variations to the house design requested by the buyer. ¹Plan is subject to approval by the Principal Developer and Local Authorities. Coral Homes reserves the right to withdraw this package at any time without notice. QBCC 50792/1014053, OFT NSW 62084C, BLD260339.